

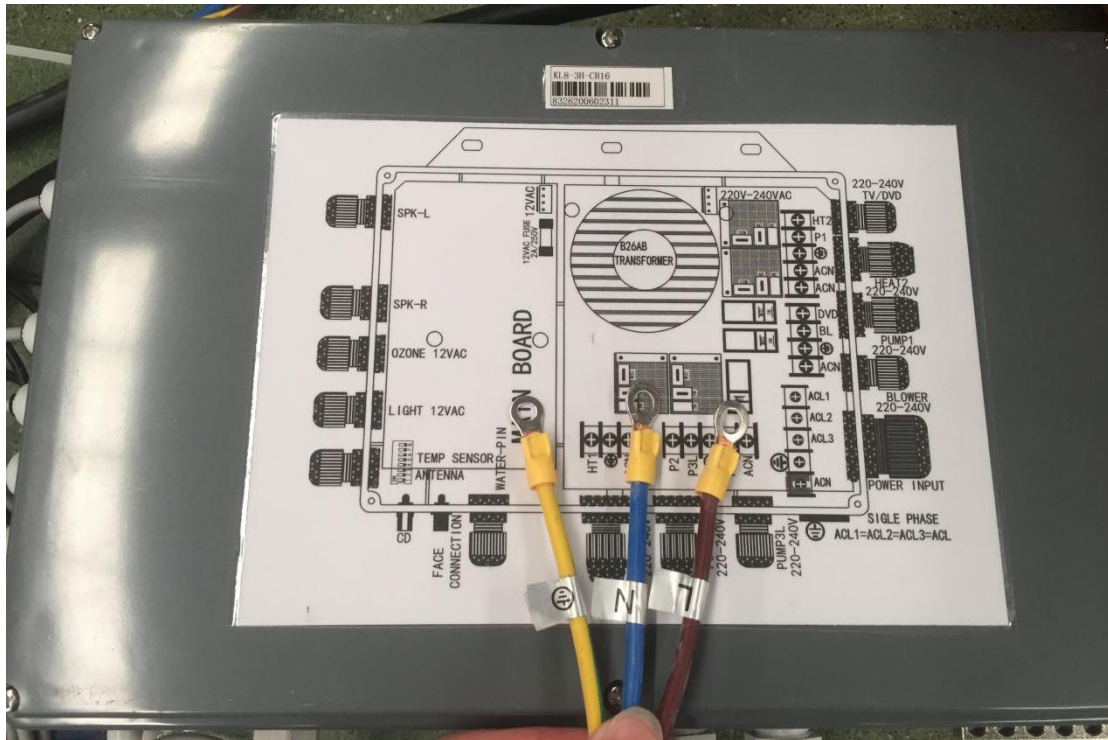


How to Connect the Wires to Electricity Power

220V single-phase

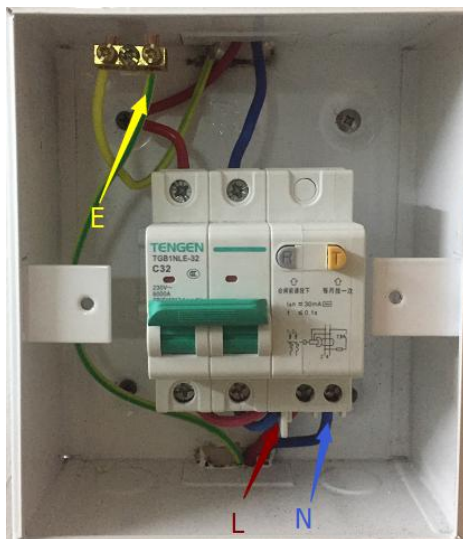
JOYONWAY system and KL8-3

The electric box is composed of 3 wires, which are live wire (L), neutral wire (N) and earth wire (E). As shown in the picture below:



All you need to do just is to connect the live wire (L), neutral wire (N) and earth wire (E) corresponding to your home.

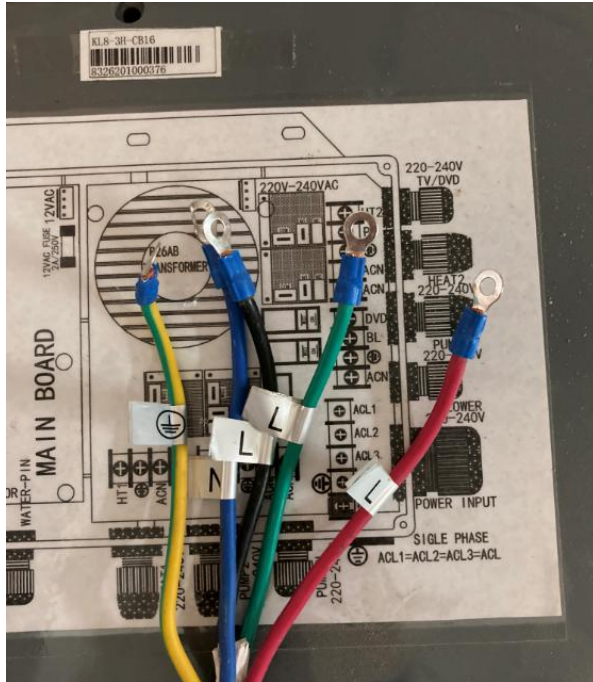
As shown in the picture below:



380V Three-phase

JOYONWAY system and KL8-3

The electric box is composed of 5 wires, which are live wire (L)*3pcs, neutral wire (N)*1pc and earth wire (E)*1pc. As shown in the picture below:



All you need to do just is to connect the live wire (L), neutral wire (N) and earth wire (E) corresponding to your home.

As shown in the picture below:

