

Balboa System Wiring Instructions

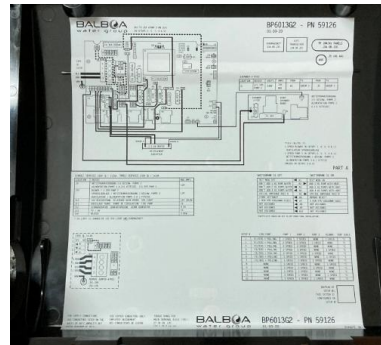
380V three-phase

First of all, we need to know that the standard voltage of this Balboa system is 220V one-phase. However, we have changed the system from 220V to 380V under the premise of ensuring safety in order to give customers a better experience.

So when you bought a 380V spa from us, all you need to do just is to connect the live wire (L), neutral wire (N) and earth wire (E) corresponding to your home.

Step 1, open the electric box.

At the same time, we can also see a detailed circuit diagram behind the system cover. As shown in the picture below:



This instruction will teach you how to distinguish between 380V and 220V in this system at the end. **We will proceed to the next step if you confirm that this system is 380V.**

Step 2, pay attention to the sticker in the upper left corner of the electric box where it connects to the household wires. As shown in the picture below:

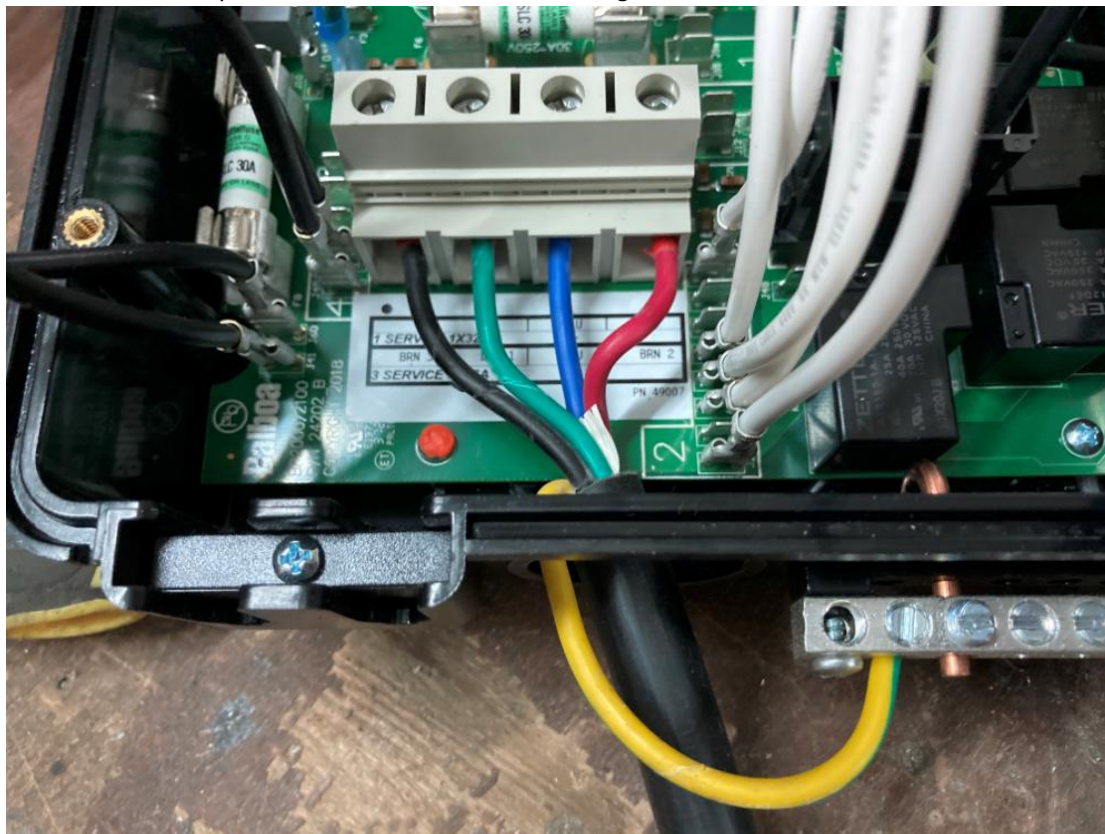


We need to follow the instructions of "3 SERVICE 3X16A", the first interface is connected to the fire wire (BRN 3), the second interface is connected to the fire wire (BRN 1), the third interface is

connected to the neutral wire (BLU), and the fourth interface is connected to the fire wire (BRN 2). The ground wire needs to be connected to the second interface outside. (PS: We need to connect the wires according to the actual sticker. Please refer to the actual sticker when the sticker is different from this description.)

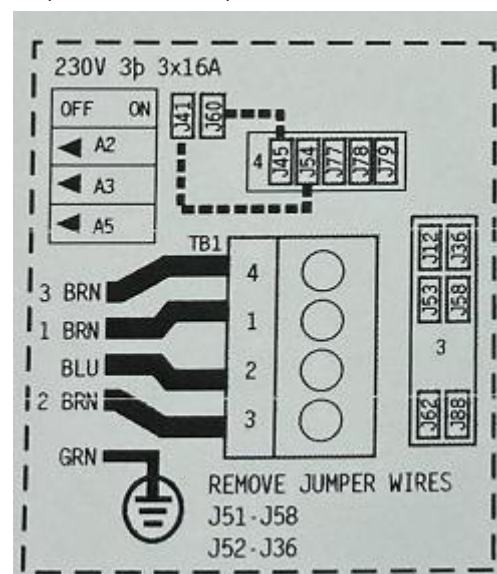
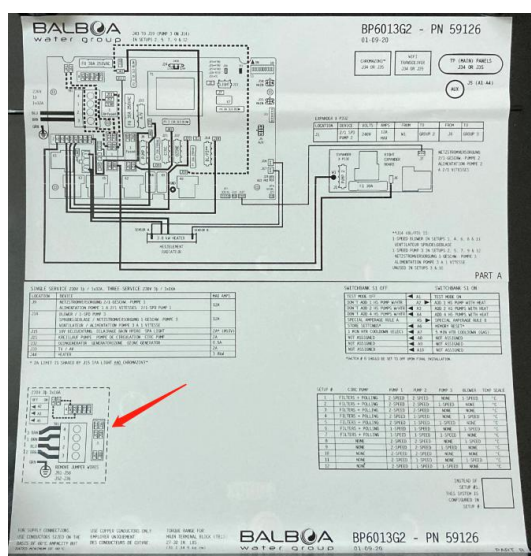
There are 5 lines that need to be connected if 380V. (3 live wires, 1 neutral wire, 1 ground wire)

It will look like the picture below when we finish wiring:



Step 3, we need to check the system cover instructions (as shown in the picture below), if they are exactly the same, the wiring is complete.

PS: What we need to check is the small picture of 380V (230V 3P 3*16A).



How to Distinguish between 380V and 220V in Balboa System

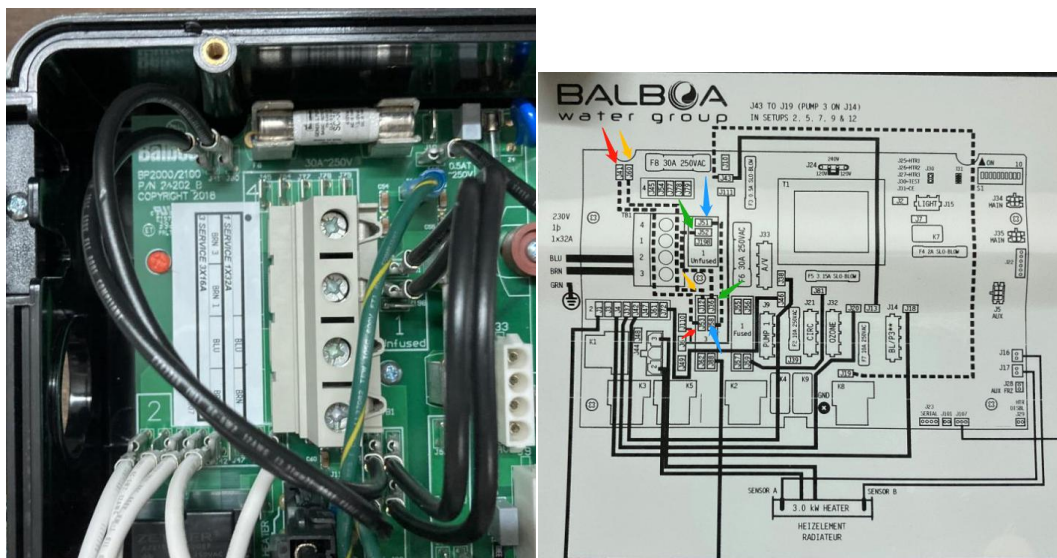
The biggest difference between 220V and 380V is to check whether certain components are connected.

220V 1-phase

For example, according to the circuit diagram behind the system cover, we can see the upper left corner part:

J41 and J53 are connected; J60 and J12 are connected; J51 and J58 are connected; J52 and J36 are connected. (There are many small letters and numbers on the circuit board).

PS: Please refer to the actual cover instructions, if this instruction is different from the cover instruction. As shown in the picture below:



380V 3-phase

We can see the following connection if 380V:

J41 connects to J54; J60 connects to J45.

PS: Please refer to the actual cover instructions, if this instruction is different from the cover instruction.

